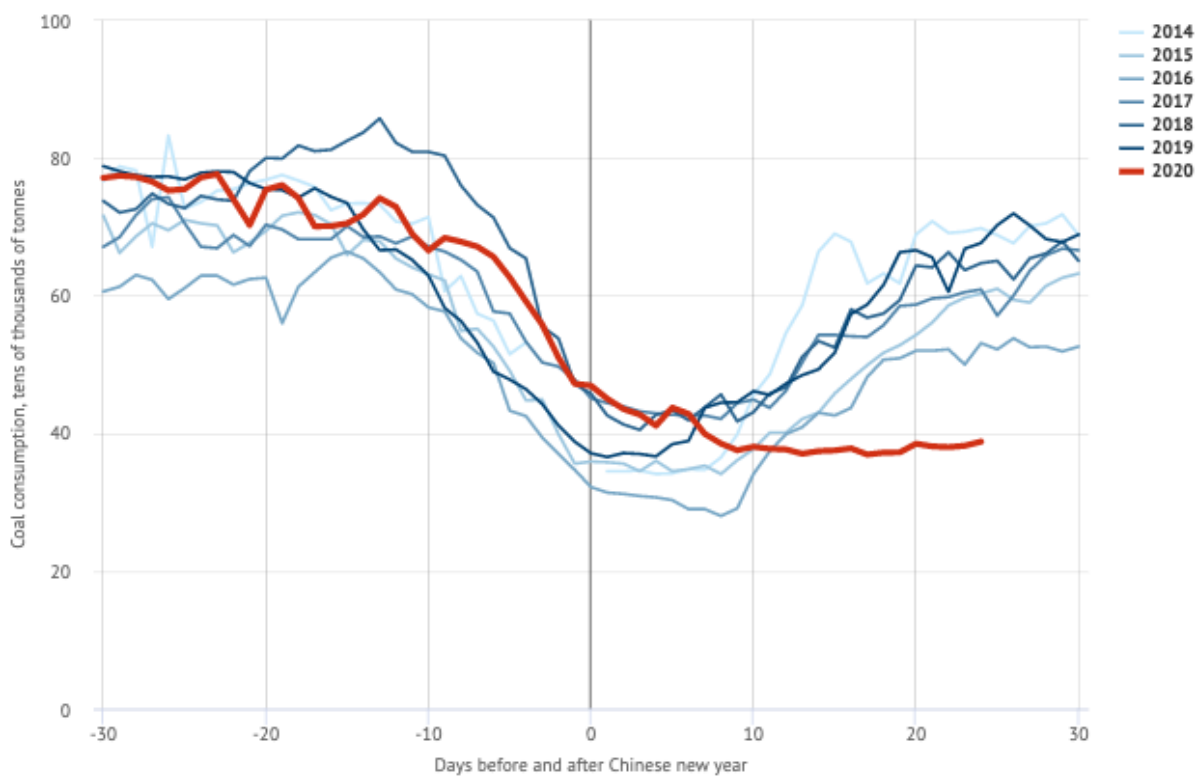




DOWNLOAD

[Coronavirus Has Temporarily Reduced China S CO2 Emissions By A Quarter](#)

Daily coal consumption at six major power firms



Daily coal consumption around the Chinese new-year period at six generating companies reporting daily data, in 10,000 tonnes per day. X-axis shows days before and after Chinese new year eve, which falls on various dates in the second half of January or in February. Source: Analysis of data from [WIND Information](#). Chart by Carbon Brief using [Highcharts](#).

[Coronavirus Has Temporarily Reduced China S CO2 Emissions By A Quarter](#)



f559db6386

[Adobe Photoshop Lightroom Classic CC 2019 v8.3 DMG Torrent Download](#)

[Autodesk inventor professional 2014 free download](#)

[Apple ha bisogno di crescere ancora a Cupertino e investe in nuovi immobili](#)

[Jaws 808s Melody Midi Kit WAV MiDi](#)

[Chief Architect Premier X11 v21.3.1.1](#)

[Il Nokia N900 con Maemo Linux arriva in Italia](#)

[SidePlayer Pro APK](#)

[FlashFXP v5.1.0 Build 3818 Incl Keygen CORE](#)

[Marketingbedrijf lekt 50 miljoen records via onbeveiligde database](#)

[Autodesk Netfabb Ultimate 2020 R0 \(x64\) Crack \[Latest\]](#)